

**CIRBP**  
**Purified Mouse Monoclonal Antibody**  
**Catalog # AO2552a****Specification**

---

**CIRBP - Product Information**

Application	WB, IHC, ICC, E
Primary Accession	<a href="#">Q14011</a>
Reactivity	Human
Host	Mouse
Clonality	Monoclonal
Isotype	Mouse IgG1
Calculated MW	18.6kDa KDa

**Immunogen**

Purified recombinant fragment of human CIRBP (AA: 1-90) expressed in E. Coli.

**Formulation**

Purified antibody in PBS with 0.05% sodium azide

**CIRBP - Additional Information**

**Gene ID** 1153

**Other Names**

CIRP

**Dilution**

WB~~ 1/500 - 1/2000

IHC~~1/200 - 1/1000

ICC~~N/A

E~~ 1/10000

**Storage**

Maintain refrigerated at 2-8°C for up to 6 months. For long term storage store at -20°C in small aliquots to prevent freeze-thaw cycles.

**Precautions**

CIRBP is for research use only and not for use in diagnostic or therapeutic procedures.

**CIRBP - Protein Information**

**Name** CIRBP

**Synonyms** A18HNRNP, CIRP

**Function**

Cold-inducible mRNA binding protein that plays a protective role in the genotoxic stress response

by stabilizing transcripts of genes involved in cell survival. Acts as a translational activator. Seems to play an essential role in cold-induced suppression of cell proliferation. Binds specifically to the 3'-untranslated regions (3'-UTRs) of stress-responsive transcripts RPA2 and TXN. Acts as a translational repressor (By similarity). Promotes assembly of stress granules (SGs), when overexpressed.

#### Cellular Location

Nucleus, nucleoplasm. Cytoplasm Note=Translocates from the nucleus to the cytoplasm after exposure to UV radiation. Translocates from the nucleus to the cytoplasm into stress granules upon various cytoplasmic stresses, such as osmotic and heat shocks. Its recruitment into stress granules occurs in the absence of TIAR proteins (By similarity).

#### Tissue Location

Ubiquitous.

### CIRBP - Protocols

Provided below are standard protocols that you may find useful for product applications.

- [Western Blot](#)
- [Blocking Peptides](#)
- [Dot Blot](#)
- [Immunohistochemistry](#)
- [Immunofluorescence](#)
- [Immunoprecipitation](#)
- [Flow Cytometry](#)
- [Cell Culture](#)

### CIRBP - Images

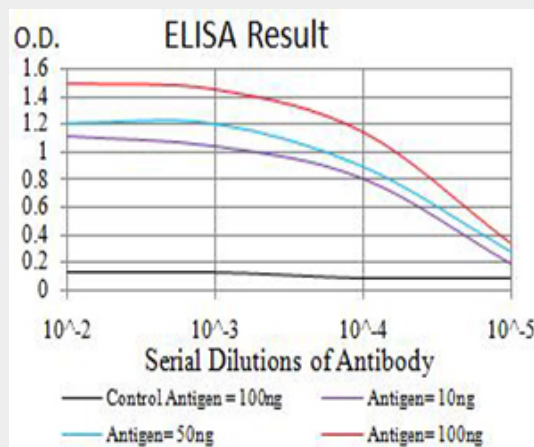


Figure 1: Black line: Control Antigen (100 ng); Purple line: Antigen (10ng); Blue line: Antigen (50 ng); Red line: Antigen (100 ng)

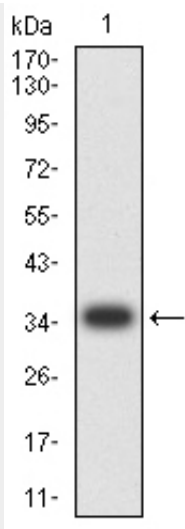


Figure 2: Western blot analysis using CIRBP mAb against human CIRBP (AA: 1-90) recombinant protein. (Expected MW is 35.9 kDa)

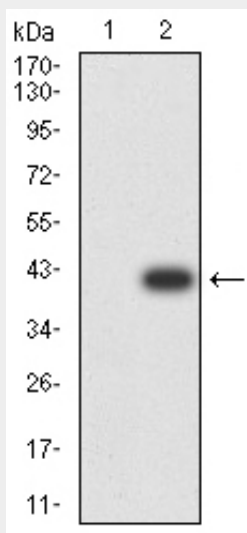


Figure 3: Western blot analysis using CIRBP mAb against HEK293 (1) and CIRBP (AA: 1-90)-hlgGfC transfected HEK293 (2) cell lysate.

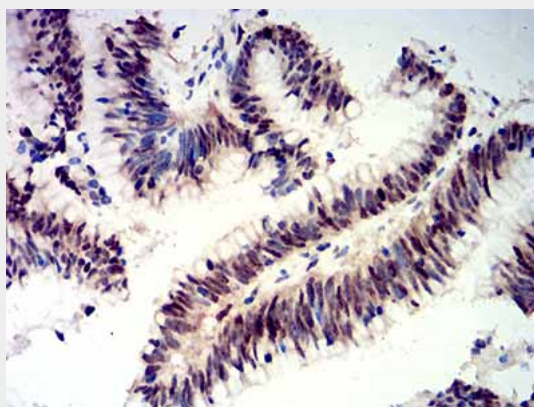


Figure 4: Immunohistochemical analysis of paraffin-embedded colon cancer tissues using CIRBP mouse mAb with DAB staining.

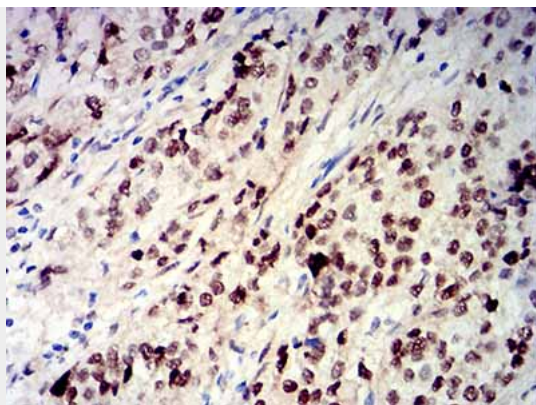


Figure 5:Immunohistochemical analysis of paraffin-embedded bladder cancer tissues using CIRBP mouse mAb with DAB staining.

#### **CIRBP - References**

- 1.PLoS One. 2015 Sep 11;10(9):e0137721.2.Med Sci Monit. 2015 May 2;21:1256-60.